

# Shipmaster<sup>®</sup>

## The Total Solution for Shipping, Receiving & EDI



Your shipping and receiving system hasn't grown with your company. Your employees have to track loads of paperwork, and it seems like the one person who knows where everything is has the day off when a problem arises.

Automation is the only way out.

*Synergistic Systems has your solution.*

 **Synergistic  
Systems**

Guaranteed Business Solutions

# Shipmaster<sup>®</sup> works like this:

ShipMaster<sup>™</sup> is a complete, Windows-based business solution for shipping, receiving and EDI, designed to streamline freight bill rating and the production of bills of lading and shipping labels.

ShipMaster<sup>™</sup> can store full LTL carrier tariff information, as well as tables containing shipper, consignee, bill-to, SKUs and much more. Bills of lading can be printed in a number of formats, and 1D and 2D bar codes can be included on the bill of lading.

EDI is incorporated into the program allowing freight bills, acknowledgments and queries to be transmitted.

Bills of lading can be generated with complete class and rate information generated from carrier tariffs, containing the shipper's SKU information and HazMat notations.

ShipMaster<sup>™</sup> has been installed in more than 1,000 locations since 1994, often by large shippers for their carriers. Created as a series of integrated modules, ShipMaster<sup>™</sup> is flexible and customizable to suit your needs and the needs of your carriers.

Automate your shipping operations and begin reaping the benefits of ShipMaster<sup>™</sup>.

## Shipper File

Efficiency in ShipMaster<sup>™</sup> is largely due to its ability to edit fields within a bill of lading, and retrieve needed data from five major file groups.

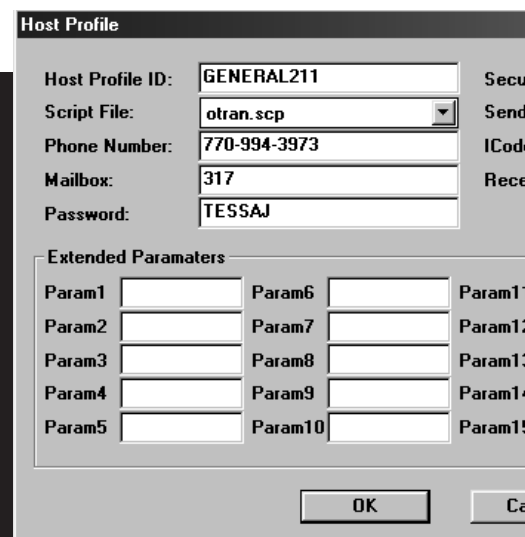
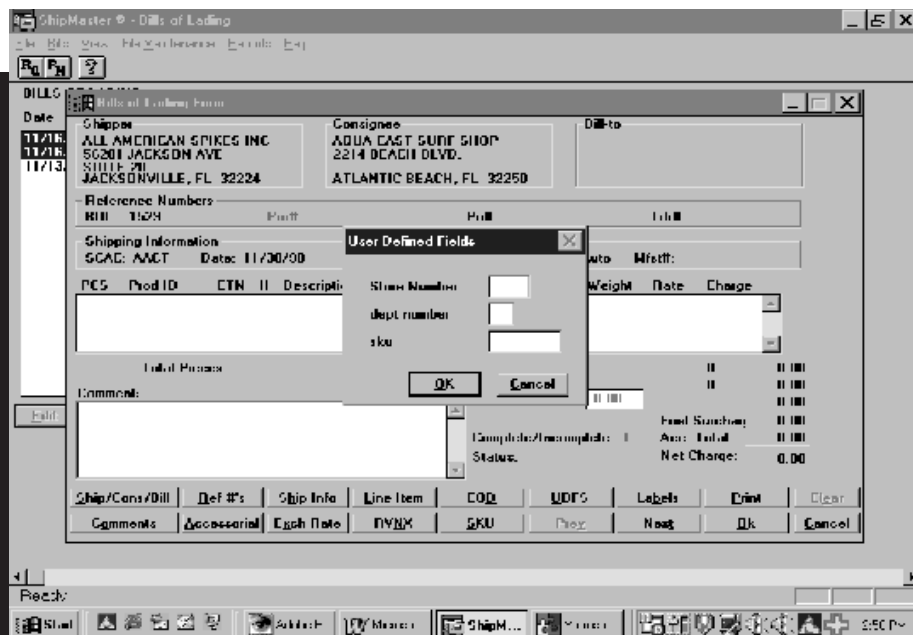
The Shipper file contains the name and address information for each shipper. ShipMaster<sup>™</sup> can handle multiple names, in situations such as warehousing or fulfillment operations. Bill of lading numbers can be automatically assigned, and printing instructions for bills of lading, case labels, and manifests can be entered. When the biller enters the desired 4x4 or shipper code, all pertinent data is automatically included on the bill of lading record and printed forms.

## Consignee File

The Consignee File contains customer codes, ship-to addresses, bill-to information, preferred carrier routing (up to 3), billing requirements and special instructions, if applicable. EDI information is also a part of this record for a future order acknowledgment or pre-shipment notification process. When the consignee code is entered on the bill of lading, all necessary information is included on the bill of lading record and printed form.

## Carrier File

The Carrier File enhances ShipMaster<sup>™</sup>'s operation by providing automatic pro number assignment and carrier choice validation at the time of input. Carrier data includes, name, contact name, and pro number numbering



information. For those carriers who provide pre-assigned pro labels, this facility allows the bill of lading and case labels to be printed (with carrier SCAC and pro number) in both bar code and alphanumeric format, eliminating the need for manual application of pro labels on forms or case labels. Check digits, rating tariffs, and carrier/third party EDI numbers are found in this record, along with ID and password security for the carrier to access ShipMaster™.

### Item/Product File

The Item/Product File is another productivity tool for the shipper. Each product may be entered into this file using its product code, abbreviated name, item number, NMFC number and rate classification. Weight per piece and cubic feet are stored to allow ShipMaster™ to calculate total shipping weight and cube. For those shippers with hazardous materials, items are flagged and described in accordance with DOT standards. The shipper's description is included so that data entry on the bill of lading only requires the item number and number of pieces.

### Rate Tables

LTL Rate Files are available from Southern Motor Carriers (SMC). By installing these rate files, the tariff information for many of the LTL carriers you wish to use will be available to ShipMaster™, which then allows automatic rating of freight bills. Rate tables for special or private tariffs can also be loaded into ShipMaster™ using files provided by the carrier. Check with us for file compatibility. T/L rate files must be entered by the user.

## Labels and Bills of Lading

ShipMaster™ has extensive label printing, bill of lading and reporting capabilities. Accurate reports are an effective management tool for monitoring the shipping operations at your business. A preprinted bill of lading or manifest can save hours of manual entry, as well as producing a document which reflects the contents and pertinent information about your shipments. Clear, concise case and pallet labels are important in the accurate handling of freight, both on your dock and after the freight is picked up by the carrier.

EDI capabilities are included in ShipMaster™. You have the ability to send a DS204 to carriers, which is a copy of the bill of lading information. You can also send a DS214 to your customers, which contain inbound shipment information. Other formats are also supported.



Priority:   
 File:   
 es File:   
 ive File:

1  Param16   
 2  Param17   
 3  Param18   
 4  Param19   
 5  Param20

Discount Structure

Shipper:  SCAC:  Country:

Prepaid (Out)				Collect (In)				
	Direct	Interline		Direct	Interline		Direct	Interline
M/C:	<input type="text"/>	<input type="text"/>	M5M:	<input type="text"/>	<input type="text"/>	M/C:	<input type="text"/>	<input type="text"/>
L5C:	<input type="text"/>	<input type="text"/>	M10M:	<input type="text"/>	<input type="text"/>	L5C:	<input type="text"/>	<input type="text"/>
M5C:	<input type="text"/>	<input type="text"/>	M20M:	<input type="text"/>	<input type="text"/>	M5C:	<input type="text"/>	<input type="text"/>
M1M:	<input type="text"/>	<input type="text"/>	M30M:	<input type="text"/>	<input type="text"/>	M1M:	<input type="text"/>	<input type="text"/>
M2M:	<input type="text"/>	<input type="text"/>	M40M:	<input type="text"/>	<input type="text"/>	M2M:	<input type="text"/>	<input type="text"/>

Applied Discount:  Rate  Charge Absolute Minimum Charge:

Applied Discount:  Rate  Charge Absolute Minimum Charge:

# Shipmaster<sup>®</sup>

## Management Reports

**Undelivered Shipments Report:** This report gives you a list of shipments due in, sorted by shipper and pro number. This information is useful to the consignee for advance dock planning and labor management.

**Undelivered Short Form:** This report can be generated for either inbound or outbound shipments. Outbound shipments are sorted by consignee name, and inbound shipments are sorted according to shipper name.

**New Shipments Report:** New Shipments Reports can be generated for inbound or outbound shipments, sorted by date, for a user-defined date range.

**Prepaid and Add Charges Report:** This report gives the shipper a list of a specific day's prepaid shipments, with charges so the freight charges may be included on the shipper's invoice to his customer.

**Delivered Shipments Report:** Reports can be generated for both inbound and outbound shipments. A carrier recap at the end of the report shows all carrier SCACs and average days per shipment.

**All Carriers Service Summary:** Inbound and outbound service reports are combined by carrier and lane. Average days and number of bills handled are totaled by carrier.

**Detail Service Report:** Service reports are sorted by inbound or outbound service, and then by pro number. Origin and destination, origin and delivery date and time, weight, pieces, bills of lading and performance data are given in this detailed report.

To learn more about how our innovative solutions can help your company, call us or visit our website

You'll love our solutions. We guarantee it!

442 Third Street  
Neptune Beach, FL 32266  
904.249.0201 • Fax: 904.249.8045  
[www.syn-sys.com](http://www.syn-sys.com)

## Features:

- Compatible with large and small carriers
- EDI(Electronic Data Interchange) format capable
- Supports multiple carrier rates
- Contains descriptive item file—NMFC class, hazardous flags and cubic feet
- Traces shipments
- Automatic carrier assignment based on consignee
- Bar-coded pro numbers
- Data export to other programs
- Flexible system
- Compiles detailed management reports
- 2D Bar Codes for bills of lading and shipping labels

## Benefits:

- Improve data entry speed and accuracy
- Easily share information via EDI
- Decrease freight mishandling and improve service through instructions on case labels
- Determine shipment locations quickly
- Adhere to customer-requested routing
- Improve rating accuracy
- Improve safety through flagging of HazMat items
- Trace shipments en route



**Guaranteed Business Solutions**